

# 2 Cards

## ABC Reward Catalog

Look inside for new  
items, new styles,  
and new colors.

### \*\*Please Note\*\*

Exchanges and/or returns are NOT allowed unless a mistake is made in ordering, or if there is a defect in the item upon receiving it. Sizing charts have been added for your convenience.

# #201 Ladies Full Zip Jacket



- 6.8-ounce, 90/10 poly/spandex jersey
- Cadet collar with contrast piping
- Tag-free label
- Taped neck
- Contrast reverse coil zipper
- Set-in sleeves
- Contrast cuff binding
- Thumbholes to keep hands warm
- Contrast trim at front pockets and thumbholes

## Ladies Sizes: XS—4XL

Ladies jackets are form fitted and fit smaller.



Black/ Charcoal Grey



Black/ True Red



Black/ True Royal



Charcoal Grey  
ACK CHeather/ Charcoal Grey



Charcoal Grey  
Heather/ Charge Green



Charcoal Grey  
Heather/ Hot Coral



Charcoal Grey  
Heather/ Pink Rush



Charcoal Grey  
Heather/ True Navy

### SIZE CHART

	XS	S	M	L	XL	XXL	3XL	4XL
Size	2	4/6	8/10	12/14	16/18	20/22	24/26	28/30
Bust	32-34	35-36	37-38	39-41	42-44	45-47	48-51	52-55

2 ABC CARDS

# #202 Universal Full Zip Jacket



- 6.8-ounce, 90/10 poly/spandex jersey
- Cadet collar with contrast piping
- Tag-free label
- Taped neck
- Contrast reverse coil zipper
- Set-in sleeves
- Contrast cuff binding
- Contrast welt front pockets

## Adult Sizes: XS—4XL

Universal Sizing, not form fitted.



Black/ Charcoal Grey



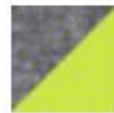
Black/ True Red



Black/ True Royal



Charcoal Grey  
Heather/ Charcoal Grey



Charcoal Grey  
Heather/ Charge Green



Charcoal Grey  
Heather/ True Navy

### SIZE CHART

	XS	S	M	L	XL	2XL	3XL	4XL
Chest	32-34	35-37	38-40	41-43	44-46	47-49	50-53	54-57

2 ABC CARDS

# #203 LED Folding Work Light



Rechargeable,  
Water Resistant  
360 Degree

## LED FOLDING WORK LIGHT

### FEATURES

**Illuminate your workspace with ease using our LED Folding Work Light.**

**Foldable, Rechargeable, Water Resistant Engineered for convenience and versatility**  
Our work light features a foldable design, allowing for easy storage and portability. Fold it up for compact storage or unfold it to illuminate your workspace.

**Say goodbye to disposable batteries.** Our LED work light is USB rechargeable, providing you with a sustainable and cost-effective lighting solution.

Built to withstand the elements, our work light is water-resistant, making it suitable for outdoor use in various weather conditions.

**Dual Rotating Panels:** Equipped with two rotating panels featuring COB LED lights, our work light delivers powerful illumination across a wide area. Adjust the panels to your desired angle for customized lighting.

Whether you're camping in the great outdoors, need extra lighting during a power outage, or working on DIY projects, our work light is your go-to lighting solution. Use it as a floodlight, spotlight, or even as a handheld flashlight.

**Foldable Handles:** The work light features foldable handles for easy carrying and hanging. Hang it from a hook or tree branch for hands-free lighting wherever you go.

#### **Versatile Lighting for Every Situation**

Crafted from high-quality materials, our LED Folding Work Light is sturdy and durable, built to withstand the rigors of everyday use.

Equipped with a built-in power bank function, our LED Folding Work Light doubles as a portable charger for your electronic devices. Simply connect your smartphone, tablet, or other USB-powered devices to the USB port on the work light for convenient charging on the go. With our work light, you'll have reliable lighting and power whenever and wherever you need it.

2 ABC CARDS

## #204 38" Bee Solar Chime



Bee Solar Windchime  
10.63x4.33x38

2 ABC CARDS



**#205**

**Nurse of Life Livin'  
Tervis Tumbler  
24oz with Lid**



The ultimate combination of personality and performance for enjoying your favorite drink! Double wall classic insulated Tervis tumbler.

**2 ABC CARDS**

# #206 Deluxe Fingertip Pulse Oximeter



- Measurement of SpO<sub>2</sub>% (Oxygen Saturation) and pulse rate
- Measures quickly and accurately
- LED display screen can display information in two directions
- Low power consumption with auto shut-off feature
- Up to 30 hours of continuous use
- Lightweight and compact design

---

**Includes:** Two AAA batteries, Nylon case, Nylon lanyard

2 ABC CARDS

# #207 Tomax Bi-Fold MagSafe Charging Station



Charge watch, phone and earbuds

Say goodbye to bulky chargers and hello to our new dual folding MagSafe travel charging station. Featuring a unique, single fold design, this charger easily slips into your pocket or bag, making it the perfect travel companion. The wireless magnetic phone charger can reach speeds of up to 15 watts and securely holds a phone in place; and the earbuds and apple watch charger complete the package by seamlessly folding in and out as needed.

-Prop 65 certified

1. Wireless Output: 15W
2. Watch Output: 2.5W
3. Earbud Output: 3W
4. Type C Input: 5V/2A 9V/3A
5. Type C to Type C Cable Included



2 ABC CARDS



# #208 Mountain Lodge Blanket

Pick your color!!!



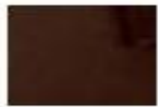
Dimensions: 50" x 60"

Bring comfort, style and warmth to your home with this luxurious blanket. Our Mountain Lodge Blanket features a cozy fleece face that reverses to soft sherpa.

- 11.9-ounce linear yard, 100% polyester fleece; 12.5-ounce linear yard
- 100% polyester sherpa
- Fully hemmed
- Port Pocket™ for easy embroidery access
- Dimensions: 50" x 60"



Black



Fireside Brown



Hearth Grey



Navy Eclipse



Red Rhubarb



Soft Camel

2 ABC CARDS

# #209 8 CUP FOOD PROCESSOR



## 8 CUP FOOD PROCESSOR

### FEATURES

**Ideal for Slicing, Shredding, Mincing, and Puree**

Can fit large foods like an entire block of cheese for quick, simple processing and less prep time

Save Time When Chopping or Pureeing  
Food processor's low and high speeds gives you the control you need for a variety of recipes  
Ideal for most of your home cooking needs

BPA-Free, dishwasher safe bowl for easy cleanup  
Compact design, easy to store and space saver

#### Features:

- 4 Stainless Steel Blades
- Two speeds
- 8 (2L) Cups BPA-free Glass Bowl
- 250 watts of power
- Dishwasher Safe Parts

2 ABC CARDS

# #210 Full Zip Fleece Jacket



**SIZES: XS-6XL**

- 8.3-ounce, 100% polyester
- Twill-taped neck
- Reverse coil zipper
- Chin guard
- Knotted zipper pulls
- Front zippered pockets
- Open cuffs
- Open hem with drawcord and toggles for adjustability

	XS	S	M	L	XL	2XL	3XL	4XL	5XL	6XL
Chest Size (inches)	32-34	35-37	38-40	41-43	44-46	47-49	50-53	54-57	58-60	61-63



Black



Deep Smoke



Forest Green



Insignia Blue



Iron Grey



Maroon



True Navy



True Red



True Royal

**2 ABC CARDS**

# #211 Ladies Full-Zip Fleece

## Ladies Sizes: XS—4XL



- 8.3-ounce, 100% polyester
- Twill-taped neck
- Reverse coil zipper
- Chin guard
- Knotted zipper pulls
- Front zippered pockets
- Open cuffs
- Open hem with drawcord and toggle for adjustability

100% polyester

### SIZE CHART

	XS	S	M	L	XL	XXL	3XL	4XL
Size	2	4/6	8/10	12/14	16/18	20/22	24/26	28/30
Bust	32-34	35-36	37-38	39-41	42-44	45-47	48-51	52-55

### COLOR INFORMATION



Black



Deep Smoke



Forest Green



Insignia Blue



Iron Grey



Maroon



Pink Blossom



True Navy



True Red



True Royal



Winter White

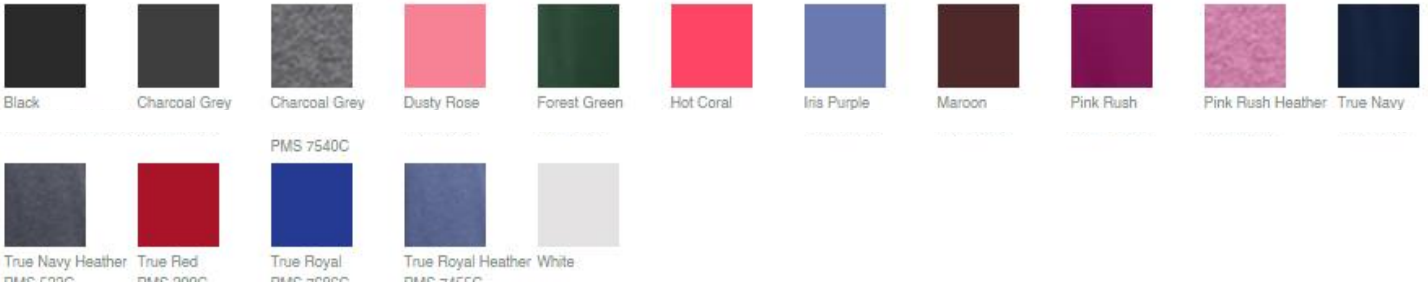
2 ABC CARDS



# #212 Ladies 1/2 Zip Stretch Pullover



- 6.8-ounce, 90/10 poly/spandex
- Tag-free label
- Smooth-faced
- Chin guard for additional comfort
- Cadet collar
- Taped neck
- Raglan sleeves
- Thumbholes to keep hands warm
- Hidden front pouch pocket
- Open cuffs and hem



## SIZE CHART

	XS	S	M	L	XL	XXL	3XL	4XL
Chest	32-34	35-37	38-40	41-43	44-46	47-49	50-53	54-57
Arm	30-30 3/4	30 3/4-31 1/2	31 1/2-32	32-32 1/2	32 1/2-33	33-33 3/8	33 3/8-33 3/4	33 3/4-34 1/2
Size	2	4/6	8/10	12/14	16/18	20/22	24/26	28/30

2 ABC CARDS



# #213 Ladies 1/4 Zip Sweatshirt



- 9-ounce, 65/35 ring spun combed cotton/poly fleece
- 2x2 rib knit collar and cuffs with spandex
- Twill-taped neck
- Open hem

**Ladies Sizes: XS—4XL**



Athletic Heather



Black



Graphite Heather



True Navy



True Red



True Royal



Vintage Heather



White

## SIZE CHART

	XS	S	M	L	XL	XXL	3XL	4XL
Size	2	4/6	8/10	12/14	16/18	20/22	24/26	28/30
Bust	32-34	35-36	37-38	39-41	42-44	45-47	48-51	52-55

**2 ABC CARDS**

# #214 Hooded Raglan Jacket



- 100% polyester shell
- 100% polyester jersey lining with mesh insets at gussets for added breathability
- Three-panel hood with drawcord and toggles
- Front slash pockets
- Articulated elbows for greater mobility
- Half elastic, half self-fabric cuffs for comfort
- Drawcord hem with toggle

**Adult Sizes: XS—6XL**



Black  
SIZE CHART



Forest Green



Graphite



Maroon



True Navy



True Red

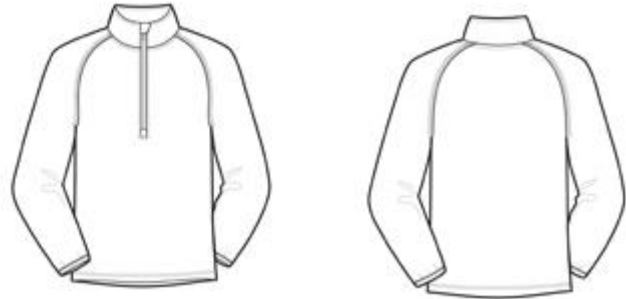


True Royal

	XS	S	M	L	XL	2XL	3XL	4XL	5XL	6XL
Chest	32-34	35-37	38-40	41-43	44-46	47-49	50-53	54-57	58-60	61-63

**2 ABC CARDS**

# #215 Men's 1/2 Zip Stretch Pullover



- 6.8-ounce, 90/10 poly/spandex jersey
- Tag-free label
- Smooth-faced
- Chin guard for additional comfort
- Cadet collar
- Taped neck
- Raglan sleeves
- Open cuffs and hem

**Adult Sizes: XS—4XL**



SIZE CHART

	XS	S	M	L	XL	2XL	3XL	4XL
Chest	32-34	35-37	38-40	41-43	44-46	47-49	50-53	54-57



**2 ABC CARDS**

# #216 1/4-Zip Fleece Pullover

**Adult Sizes:  
XS—6XL**



- 8.3-ounce, 100% polyester
- Twill-taped neck
- Reverse coil zipper
- Chin guard
- Bungee cord zipper pull
- Open cuffs
- Open hem with drawcord and toggles for adjustability

## SIZE CHART

	XS	S	M	L	XL	2XL	3XL	4XL	5XL	6XL
Chest Size (inches)	32-34	35-37	38-40	41-43	44-46	47-49	50-53	54-57	58-60	61-63

## COLOR INFORMATION



Black



Iron Gray



True Navy

**2 ABC CARDS**

# #217 Electric Lunch Box, Portable Food Warmer Heating, Food-Grade Stainless Steel Container, 12V 110V 40W Adapter, Car Truck Home Work Use, Spoon and 2 Compartments Included



- **【FOOD GRADE MATERIAL】** - The electric lunch box is made of food grade PP plastic and 304 stainless steel container. It has strong heat resistance and meets the safety standards of dietary materials.
- **【Heating Time And Ensure Safety】** - The heating time is a little long, heating time 30-50 minutes at normal temperature. because its power: 40W. But then your car will be safer. Note: Don't add liquid to the base of the lunch box to avoid short circuit
- **【Tasty Food Match Cool Lunch Box】** - Say goodbye to Fast Food! Our Portable Electric Lunch Box contains two different plugs: one for Work/Home (110V) and another one for Cars/Trucks (12V).
- **【A Fun & Healthy Cool Way to Lunch】** - Prepare your own favorite healthy meals and then choose car use cable or home use cable to plug in the lunch box. Indicator light up, it means the food is heating.
- **【Easy To Clean】** The car electric lunch box built-in high quality 304 stainless steel tray. Easy to clean, You can also wash stainless steel trays in a dishwasher.
- Colors may vary.

2 ABC CARDS



# #218 1/4 Zip Sweatshirt



These durable, colorfast quarter-zips feature a better fit with minimal shrinkage, as well as 2x2 rib knit cuffs and waistband.

- 9-ounce, 65/35 ring spun combed cotton/poly fleece
- Twill-taped neck
- 2x2 rib knit cuffs and hem with spandex

## Sizes: XS-4XL

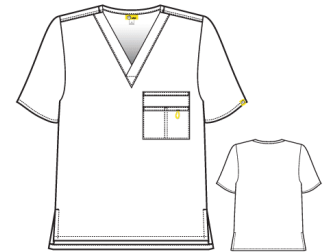


SIZE CHART

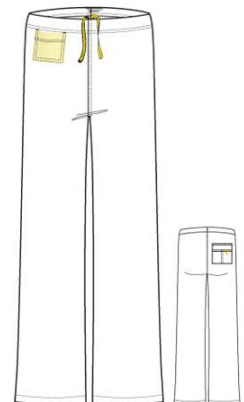
	XS	S	M	L	XL	2XL	3XL	4XL
Chest	32-34	35-37	38-40	41-43	44-46	47-49	50-52	53-55

2 ABC CARDS

# #219 Alpha-Unisex V Neck Top & Drawstring Cargo Pant



Sizes XXS-5X



**UNISEX FIT:**

Relaxed and roomy to accommodate a full range of shapes and sizes.

	XXS	XS	S	M	L	XL	2X	3X	4X	5X
Chest	31-32	33-34	35-37	38-40	41-44	45-48	49-52	53-56	57-60	61-64
Waist	23-24	25-26	27-29	30-32	33-36	37-40	41-44	45-48	49-52	53-57
Hip	32-33	34-35	36-38	39-41	42-45	46-49	50-53	54-57	58-61	62-65

2 ABC CARDS

# #220 Port Authority Urban Backpack



## Product Description

An all-utility backpack for your urban or business excursions. Thoughtful features make it useful on the trail or while traveling too.

- 600 denier mini ripstop polyester with contrasting 600 denier polyester
- Large main compartment
- Suspended interior padded laptop sleeve
- Two side-entry flat pockets
- 5-inch deep front top pocket
- Easy-access lower front organizer pocket
- Side stretch mesh pocket
- Waist and sternum straps
- Side compression straps for heavier loads
- Air mesh padded handle and back panel
- Laptop sleeve dimensions: 11.8" h x 11.6" w x 1.8" d
- Dimensions: 19" h x 13" w x 8.25" d; Approx. 2,038 cubic inches



 Black/ Hunter/ Stone	 Black/ Light Grey/ Stone
 Black/ Magnet/ Black	 Black/ Red/ Stone
 Black/ Royal/ Stone	 Bright Lime/ Magnet/ Black
 Red/ Magnet/ Black	 Royal/ Magnet/ Black



2 ABC CARDS

## #221 Realtree Xtra Camo Duffel



Realtree Xtra<sup>®</sup> camo pattern.

Dimensions: 12.75"h x 27.25"w x 13.5"d

## #222 Military Camo/Black Duffel



Military Camo/Black pattern

Dimensions: 12.75"h x 27.25"w x 13.5"d

- 600 denier polyester canvas with 210 denier polyester lining
- D-shaped zippered entry for easy access in main compartment
- Two large zippered end pockets
- Two exterior zippered pockets on front
- Padded handle
- Detachable, adjustable shoulder strap
- Dimensions: 12.75"h x 27.25"w x 13.5"d; Approx. 4,690 cubic inches

*Note: Bags not intended for use by children 12 and under. SanMar bags*

2 ABC CARDS

# #223

# CornerStone Ladies Snag-Proof Polo



Tough enough for most general work environments, this high-performance polo defies snags, resists wrinkles, fights odors and wicks moisture so you keep your professional edge all day long.

- 6.6-ounce snag-proof polyester
- Rental friendly
- Traditional, relaxed look
- Tag-free label
- Flat knit collar
- 3-button placket with dyed-to-match buttons
- Open hem sleeves
- Side vents

*\*Due to the nature of 100% polyester performance fabrics, special care must be taken throughout the screen printing process.*

#### CARE INSTRUCTIONS

Machine Wash Cold With Like Colors. Only Non-Chlorine Bleach When Needed. Tumble Dry Low. Do Not Use Fabric Softener. Remove Promptly. Cool Iron If Necessary.



front



back

## Size: XS — 4X

#### COLOR INFORMATION



Black



Dark Navy



Maroon



Red



Royal

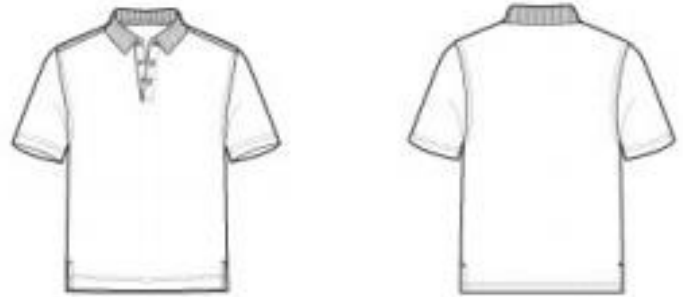
#### SIZE CHART

	3XL	4XL	XXL	XS	S	M	L	XL
Size	24/26	28/30	20/22	2	4/6	6/10	12/14	16/18
Bust	48-51	52-55	45-47	32-34	35-38	37-38	38-41	42-44

## 2 ABC CARDS



# #224 Cornerstone Snag-Proof Polo



Tough enough for most general work environments, this high-performance polo defies snags, resists wrinkles, fights odors and wicks moisture so you keep your professional edge all day long.

- 6.6-ounce snag-proof polyester
- Rental friendly
- Tag-free label
- Flat knit collar
- 3-button placket with dyed-to-match buttons
- Open hem sleeves
- Side vents

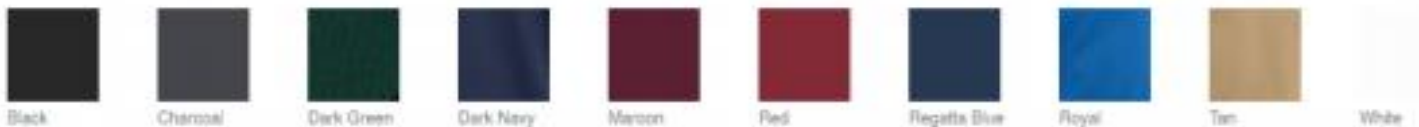
*\*Due to the nature of 100% polyester performance fabrics, special care must be taken throughout the screen printing process.*

### CARE INSTRUCTIONS

Machine wash cold with like colors. Only non-chlorine bleach if needed. Tumble dry low. Do not use fabric softener. Remove promptly. Cool iron if necessary. Do not dry clean.

## Sizes: XS-6XL

### COLOR INFORMATION



### SIZE CHART

	XS	S	M	L	XL	2XL	3XL	4XL	5XL	6XL
Chest	32-34	35-37	38-40	41-43	44-46	47-49	50-53	54-57	58-60	61-63



2 ABC CARDS

## #225 Carhartt Lunch 6-can cooler



**Navy, Black or Brown**

Whether you want your leftovers to stay warm 'til lunch or that six-pack to stay cool 'til clock-out, this seam-sealed, insulated cooler is up to the task. A separate top compartment helps you avoid crushed sandwiches and chips.

- 600D polyester
- Rain Defender® durable water repellent (DWR)
- Seam-sealed to prevent ice from leaking as it melts
- Insulated top compartment to separate food
- Fully insulated main compartment can hold up to six 12-ounce cans
- Front slash pocket
- Shoulder strap and top handle
- Carhartt label sewn on front
- Dimensions: 9"h x 10"w x 7"

**2 ABC CARDS**

# #227 Men's Red Kap Industrial Cargo Pant



What you need, on hand, all the time. Cargo pockets with snaps give you a reliable place to store the tools of your trade. Built to IL50\*-strength standards.

- 8-ounce, 65/35 poly/cotton twill with Touchtex™ technology for superior color retention, soil release and wickability
- Heavy-duty brass ratcheting zipper with button closure
- Two front pockets
- Two hip pockets, left pocket has a button closure
- Darts over hip pockets
- Two patch leg pockets with inverted center pleats, one-piece pocket flaps with mitered corners and two concealed snap closures

#### CARE INSTRUCTIONS

Industrial Wash. Home Wash. Light soil wash.

#### SIZE CHART

WAIST	30	31	32	33	34	35	36	37	38	40	42	44	46	48	50
LENGTH															
30	X		X		X		X		X	X	X	X			
32	X		X		X		X		X	X	X	X			
34			X		X		X		X	X					
36U										X	X	X	X	X	X
37U	X		X	X*	X		X		X						

\*Size Not Available in Khaki



Black



Charcoal



Khaki



Navy

2 ABC CARDS

# #228 Men's Red Kap Industrial Cargo Pant



What you need, on hand, all the time. Cargo pockets with snaps give you a reliable place to store the tools of your trade. Built to IL50\*-strength standards.

- 8-ounce, 65/35 poly/cotton twill with Touchtex™ technology for superior color retention, soil release and wickability
- Heavy-duty brass ratcheting zipper with button closure
- Two front pockets
- Two hip pockets, left pocket has a button closure
- Darts over hip pockets
- Two patch leg pockets with inverted center pleats, one-piece pocket flaps with mitered corners and two concealed snap closures

#### CARE INSTRUCTIONS

Industrial Wash. Home Wash. Light soil wash.

#### SIZE CHART

WAIST	30	31	32	33	34	35	36	37	38	40	42	44	46	48	50
LENGTH															
30	X		X		X		X		X	X	X	X			
32	X		X		X		X		X	X	X	X			
34			X		X		X		X	X					
36U										X	X	X	X	X	X
37U	X		X	X*	X		X		X						

\*Size Not Available in Khaki



Black



Charcoal



Khaki



Navy

2 ABC CARDS



#229

# Glass Cutting Board

11 3/4 x 7 3/4 design



#1 Roaring Fork  
Great Smokey Mtns, TN



#2 Fall Equinox  
Great Smokey Mtns, TN



#3 Salter Path, Emerald Isle,  
Crystal Coast, North Carolina



#4 Chimney Tops  
Great Smokey Mtns, TN



#5 Blondie lives on Shackleford Banks  
of Shackleford Island, North Carolina  
She is one of the 120 wild horses living

## Pick your design

• *Photos are by our own Joe Scott, EMRMC Dietary*

• *Note, Joe has been credited on each photo!!*

**2 ABC CARDS**



# #230 MEN 5PKT ELAS CNTR DRAW CORD PANTS



- 01 BLACK
- 08 NEW ROYAL
- 10 WHITE
- 23 INDIGO
- 328 BAHAMA
- 37 HUNTER GREEN
- 39 TEAL
- 549 PURPLE RAIN
- 40 CIEL BLUE
- 65 WINE
- 905 STEEL
- 910 GRANITE

**Sizes: XS-5XL**  
**Tall Available to XL**

Matching top is located on  
**#174**

\* Clinic approved

Men's										
Size	XXS	XS	S	M	L	XL	2XL	3XL	4XL	5XL
	29-31	32-34	35-37	38-40	42-44	46-48	50-52	54-56	58-60	62
Chest	29-31½	32-34½	35-37½	38-40½	42-44½	46-48½	50-52½	54-56½	58-60½	62-64½
Waist	23-25½	26-28½	29-31½	32-34½	36-38½	40-42½	44-46½	48-50½	52-54½	56-58½

**2 ABC CARDS**

# #231 Ladies Grey's Anatomy 3 PKT Logo Waist Pant

01 BLACK

08 NEW ROYAL

23 INDIGO

328 BAHAMA

37 HUNTER GREEN

40 CIEL BLUE

65 WINE

905 STEEL

910 GRANITE



Matching top is located on  
#184 or #188

Matching scrub jacket  
#232

\* Clinic approved

Sizes: **XS-5XL**  
Petite & Tall Available

Women's	00	0-2	4-6	8-10	12-14	16-18	20-22	24-26	28-30	32-34
Size	XXS	XS	S	M	L	XL	2XL	3XL	4XL	5XL
Bust	29-30	31-32	33-35	36-38	39-41	42-44	45-48	49-52	53-56	57-60
Waist	21½-22½	23½-25½	25½-27½	28½-30½	31½-33½	34½-36½	37½-40½	41½-44½	45½-48½	49½-52½
Hip	31½-32½	33½-35½	35½-37½	38½-40½	41½-43½	44½-46½	47½-50½	51½-54½	55½-58½	59½-62½

2 ABC CARDS

# #232

# Ladies Grey's Anatomy 3 PKT Cuffed Warmup

- 01 BLACK
- 08 NEW ROYAL
- 10 WHITE
- 23 INDIGO
- 328 BAHAMA
- 37 HUNTER GREEN
- 39 TEAL
- 40 CIEL BLUE
- 503 GALAXY
- 549 PURPLE RAIN
- 65 WINE
- 905 STEEL
- 910 GRANITE



\* Clinic approved

**Sizes: XS-5XL**  
**Petite & Tall Available**

Women's										
	00	0-2	4-6	8-10	12-14	16-18	20-22	24-26	28-30	32-34
Size	XXS	XS	S	M	L	XL	2XL	3XL	4XL	5XL
Bust	29-30	31-32	33-35	36-38	39-41	42-44	45-48	49-52	53-56	57-60
Waist	21½-22½	23½-25½	25½-27½	28½-30½	31½-33½	34½-36½	37½-40½	41½-44½	45½-48½	49½-52½
Hip	31½-32½	33½-35½	35½-37½	38½-40½	41½-43½	44½-46½	47½-50½	51½-54½	55½-58½	59½-62½

**2 ABC CARDS**

# #233

# Ladies Grey's Anatomy 6 PKT Tie Front Cargo Pant

- 01 BLACK
- 471 MOONSTRUCK
- 08 NEW ROYAL
- 503 GALAXY
- 10 WHITE
- 549 PURPLE RAIN
- 23 INDIGO
- 600 SCARLET RED
- 328 BAHAMA
- 65 WINE
- 37 HUNTER GREEN
- 905 STEEL
- 39 TEAL
- 910 GRANITE
- 40 CIEL BLUE



Matching top is located on  
#184 or #188

\* Clinic approved

**Sizes: XXS-5XL**  
**Petite available to XXL**  
**Tall available to XL**

Women's										
	00	0-2	4-6	8-10	12-14	16-18	20-22	24-26	28-30	32-34
Size	XXS	XS	S	M	L	XL	2XL	3XL	4XL	5XL
Bust	29-30	31-32	33-35	36-38	39-41	42-44	45-48	49-52	53-56	57-60
Waist	21½-22½	23½-25½	25½-27½	28½-30½	31½-33½	34½-36½	37½-40½	41½-44½	45½-48½	49½-52½
Hip	31½-32½	33½-35½	35½-37½	38½-40½	41½-43½	44½-46½	47½-50½	51½-54½	55½-58½	59½-62½

**2 ABC CARDS**

# #234 Carhartt Force Cotton Delmont Long Sleeve T Shirt



## COLOR INFORMATION



Black



Carbon Heather



Heather Grey



Navy

## SIZE CHART

	S	M	L	XL	2XL	3XL	4XL
Chest	34-36	38-40	42-44	46-48	50-52	54-56	58-60

This tee wicks sweat and allows stains to wash out easily, so you can stay focused on the job.

- Durable 5.75-ounce, 65/35 cotton/poly plaited jersey knit
- 59/41 cotton/poly (Heather Grey)
- 60/40 cotton/poly (Carbon Heather)
- FastDry<sup>®</sup> technology wicks away sweat
- Stain Breaker<sup>®</sup> technology releases stains
- Plaited knit construction so that poly is against the skin for moisture transportation while cotton on the face pulls moisture to the exterior
- Raglan sleeves to increase range of motion
- Left chest pocket
- Contrast neck tape
- Tagless neck label
- Smooth flatlock seams
- Carhartt label sewn on left chest pocket
- Carhartt Force<sup>®</sup> labeling on left sleeve
- Relaxed fit

## CARE INSTRUCTIONS

Machine wash cold with like colors, Non-chlorine bleach when needed, Tumble dry low, Do not use fabric softeners, Do not iron ornamentation.

**Sizes: S-4XL**

**2 ABC CARDS**



# #235

# Port Authority Universal Cozy 1/4 Zip Fleece



Ultra-soft meets cozy warmth in these layerable sherpa fleece pullovers. Ideal for cooler days, they are comfortable versatile and designed to fend off the chill in style.

- 6.8-ounce, 100% polyester sherpa fleece
- Reverse coil zipper
- Dyed-to-match neck tape, zipper and zipper pull
- Open cuffs and hem
- Side vents

### CARE INSTRUCTIONS

Machine wash cold separately. Do not bleach. Tumble dry low. Remove promptly. Cool iron if necessary.

## Sizes: XS-4XL

### COLOR INFORMATION



Black



Charcoal



Grey Heather



Oatmeal Heather

### SIZE CHART

	XS	S	M	L	XL	2XL	3XL	4XL
Chest	32-34	35-37	38-40	41-43	44-46	47-49	50-53	54-57

## 2 ABC CARDS

# #236 Port Authority Ladies Cozy 1/4 Zip Fleece



Ultra-soft meets cozy warmth in these layerable sherpa fleece pullovers. Ideal for cooler days, they are comfortable versatile and designed to fend off the chill in style.

- 6.8-ounce, 100% polyester sherpa fleece
- Reverse coil zipper
- Dyed-to-match neck tape, zipper and zipper pull
- Open cuffs and hem
- Side vents

#### CARE INSTRUCTIONS

Machine wash cold separately. Do not bleach. Tumble dry low. Remove promptly. Cool iron if necessary.

**Sizes: S-4XL**

#### COLOR INFORMATION



Black



Charcoal



Grey Heather



Marshmallow



Navy Heather



Oatmeal Heather



Pop Raspberry

#### SIZE CHART

	XS	S	M	L	XL	XXL	3XL	4XL
Size	2	4/6	8/10	12/14	16/18	20/22	24/26	28/30
Bust	32-34	35-36	37-38	39-41	42-44	45-47	48-51	52-55

**2 ABC CARDS**

#237

## Stanley Quencher H2.O Tumbler



Black is  
30 oz

Colors are 40 oz

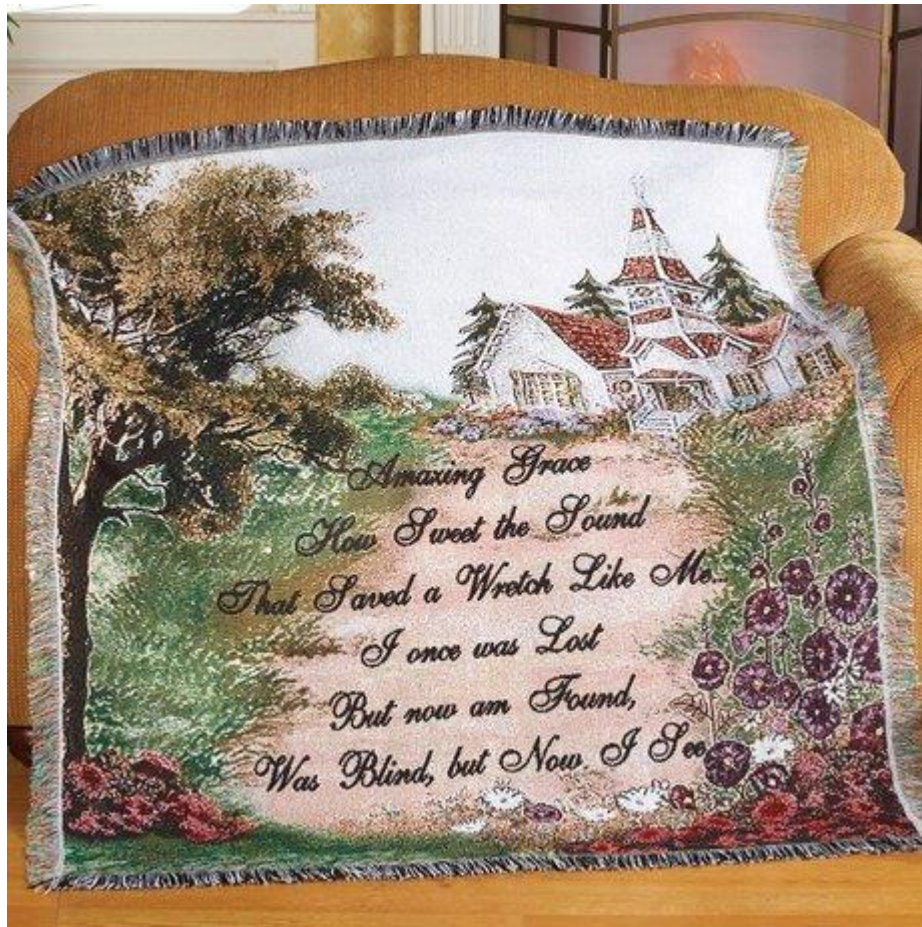


Constructed of recycled stainless steel for sustainable sipping, the 40oz Quencher H2.0 offers maximum hydration with fewer refills. Thanks to STANLEY's vacuum insulation, your water will stay ice-cold, hour after hour. The advanced FlowState lid features a rotating cover with three positions : a straw opening designed to resist splashes while holding the reusable straw in place, a drink opening and a full-cover top..The ergonomic handle includes comfort-grip inserts for easy carrying, and the narrow base fits just about any car cup holder.

2 ABC CARDS

#238

## Amazing Grace Tapestry Throw Blanket



Lines from the hymn "Amazing Grace" decorate this throw with a beautiful message of forgiveness and redemption. Soft tapestry throw features an outdoor scene of a church at the end of a charming country lane. Lovely colors in the center are surrounded by a black and white fringe border. Machine wash. Cotton, polyester. 50"L x 60"W

2 ABC CARDS



# #241 Port Authority Ladies Vertical Full



## Product Description

With an inviting vertical texture, soft cotton interior and durable polyester exterior, this easy-to-layer style will have you thinking beyond a sweater for workdays or the weekend.

- 7.5-ounce, 63/37 poly/cotton
- Twill tape trim at neck
- Contrast color inside cadet collar
- Front and back shoulder seaming
- Coil zipper
- Open cuffs
- Open hem

## Sizes XS-4X

### SIZE CHART

	XS	S	M	L	XL	XXL	3XL	4XL
Size	2	4/6	8/10	12/14	16/18	20/22	24/26	28/30
Bust	32-34	35-36	37-38	39-41	42-44	45-47	48-51	52-55

### COLOR INFORMATION



Black/ Iron Grey

MS NTR BLACK CPMS 426 C



Iron Grey/ Black



Regatta Blue/ Iron

Grey



True Navy/ Iron

Grey

# 2 ABC CARDS



# #242 Port Authority Ladies Vertical Texture Full-Zip Jacket



front



back



With an inviting vertical texture, soft cotton interior and durable polyester exterior, this easy-to-layer style will have you thinking beyond a sweater for workdays or the weekend.

- 7.5-ounce, 63/37 poly/cotton
- Twill tape trim at neck
- Front and back seaming
- Open cuffs
- Open hem

#### CARE INSTRUCTIONS

Machine Wash Cold, Wash With Like Colors, Delicate Cycle  
Only, Do Not Bleach, Tumble Dry Low, Cool Iron If  
Necessary.

#### SIZE CHART

	XS	S	M	L	XL	XXL	3XL	4XL
Size	2	4/6	8/10	12/14	16/18	20/22	24/26	28/30
Bust	32-34	35-36	37-38	39-41	42-44	45-47	48-51	52-55

#### COLOR INFORMATION



Black/ Iron Grey  
PMS NTR BLACK C



Iron Grey/ Black  
PMS 426 C



Regatta Blue/ Iron  
Grey  
PMS 7694 C



True Navy/ Iron  
Grey  
PMS 2768 C

2 ABC CARDS

# #243 Sport-Tek Ladies Lightweight French Terry Bomber



front



back



Casual and soft, this cotton-rich bomber gives a classic silhouette an on-trend twist.

- 6.5-ounce, 59/41 combed ring spun cotton/poly French terry
- Tag-free label
- Front pockets
- 2x2 rib knit collar, cuffs and hem

#### CARE INSTRUCTIONS

Machine wash cold with like colors, only non-chlorine bleach if needed. Tumble dry low, cool iron if necessary.

Sizes XS-4X

#### SIZE CHART

	XS	S	M	L	XL	XXL	3XL	4XL
Size	2	4/6	8/10	12/14	16/18	20/22	24/26	28/30
Bust	32-34	35-36	37-38	39-41	42-44	45-47	48-51	52-55

#### COLOR INFORMATION



Black  
PMS BLACK C



Ecru



Heather Black  
PMS 426C

2 ABC CARDS

# #244 2 Pocket Skecher Stability Snap Warm-up (Scrub) Jacket

- 01 BLACK
- 230 NEW KHAKI

---

- 08 NEW ROYAL
- 328 BAHAMA

---

- 10 WHITE
- 37 HUNTER GREEN

---

- 1276 NEW GRAPE
- 39 TEAL

---

- 1277 EGGPLANT
- 40 CIEL BLUE

---

- 1295 TRUE RED
- 41 NAVY

---

- 1659 NEW TURQUOISE
- 503 GALAXY

---

- 18 PEWTER
- 65 WINE



Sizes XS-5X

Women's										
	00	0-2	4-6	8-10	12-14	16-18	20-22	24-26	28-30	32-34
Size	XXS	XS	S	M	L	XL	2XL	3XL	4XL	5XL
Bust	29-30	31-32	33-35	36-38	39-41	42-44	45-48	49-52	53-56	57-60
Waist	21½-22½	23½-25½	25½-27½	28½-30½	31½-33½	34½-36½	37½-40½	41½-44½	45½-48½	49½-52½
Hip	31½-32½	33½-35½	35½-37½	38½-40½	41½-43½	44½-46½	47½-50½	51½-54½	55½-58½	59½-62½

2 ABC CARDS

# #245 Ladies Grey's Anatomy 3 PKT BACK LOGO ELASTIC CARGO

01 BLACK

08 NEW ROYAL

10 WHITE

1277 EGGPLANT

2165 MINT KISS

23 INDIGO

312 OLIVE

328 BAHAMA

37 HUNTER GREEN

39 TEAL

40 CIEL BLUE

471 MOONSTRUCK

600 SCARLET RED

65 WINE

905 STEEL



Matching top is located on  
#189

Matching scrub jacket  
#246

\* Clinic approved

Sizes XXS-5X

Women's										
	00	0-2	4-6	8-10	12-14	16-18	20-22	24-26	28-30	32-34
Size	XXS	XS	S	M	L	XL	2XL	3XL	4XL	5XL
Bust	29-30	31-32	33-35	36-38	39-41	42-44	45-48	49-52	53-56	57-60
Waist	21½-22½	23½-25½	25½-27½	28½-30½	31½-33½	34½-36½	37½-40½	41½-44½	45½-48½	49½-52½
Hip	31½-32½	33½-35½	35½-37½	38½-40½	41½-43½	44½-46½	47½-50½	51½-54½	55½-58½	59½-62½

Matching top is located on  
#189

2 ABC CARDS

# #246

# Ladies Grey's Anatomy 5 PKT Gianna Warm Up

01 BLACK

40 CIEL BLUE

08 NEW ROYAL

471 MOONSTRUCK

10 WHITE

600 SCARLET RED

23 INDIGO

65 WINE

312 OLIVE

905 STEEL

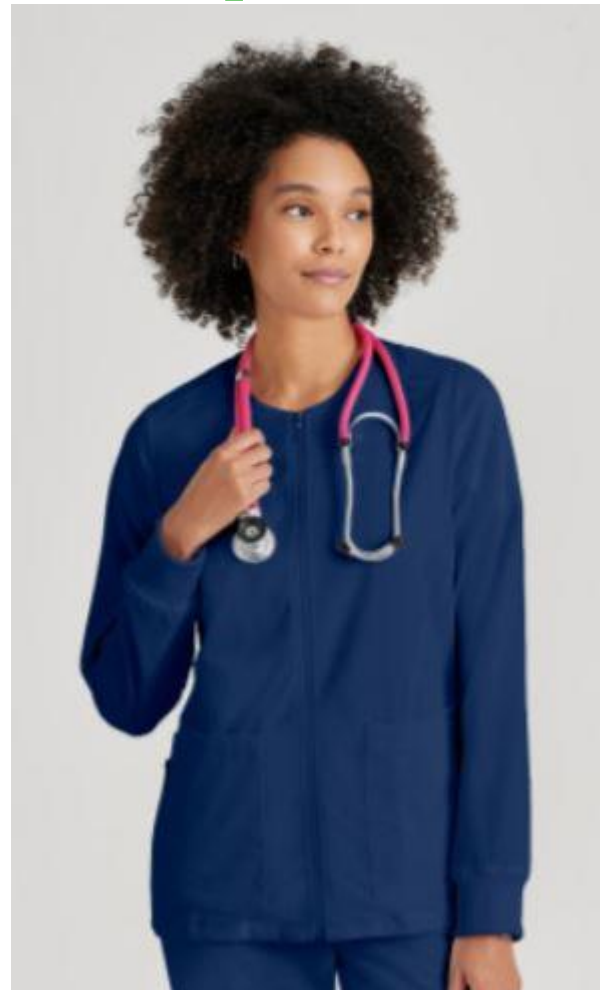
328 BAHAMA

Matching top is located on  
#189

37 HUNTER GREEN

Matching pants located  
#245

39 TEAL



\* Clinic approved

Sizes **XXS-5X**

Women's										
	00	0-2	4-6	8-10	12-14	16-18	20-22	24-26	28-30	32-34
Size	XXS	XS	S	M	L	XL	2XL	3XL	4XL	5XL
Bust	29-30	31-32	33-35	36-38	39-41	42-44	45-48	49-52	53-56	57-60
Waist	21½-22½	23½-25½	25½-27½	28½-30½	31½-33½	34½-36½	37½-40½	41½-44½	45½-48½	49½-52½
Hip	31½-32½	33½-35½	35½-37½	38½-40½	41½-43½	44½-46½	47½-50½	51½-54½	55½-58½	59½-62½

Matching top is located on  
#189

**2 ABC CARDS**



#247

## Large Beach Tote Remade Bogg look



Approx size is 19w x 12.5h x 9d

Both are same size.

Logo is on both. Pick your color!

Blue or Gold

2 ABC CARDS