

**1 Card**

**FIRST VALUES**

**Friendliness-Innovation-Respect-Service-Trust**

**REWARDS**

**Look inside for new items, new styles, and new colors.**

**\*\*Please Note\*\***

**Exchange and/or returns are NOT allowed unless a mistake is made in ordering, or if there is a defect in the item upon receiving it. Sizing charts have been added for your convenience.**

**1 FIRST CARD**

Rev. 10.14.2024

# #1003 Windshield Cleaner



## Windshield Cleaner

### FEATURES

- Clean dust, water, & dirt off your windshield
- Helps to reach higher & farther across any windshield
- Also, can be used on home windows & mirrors
- Perfect for cars, large trucks, SUVs, RVs and vans.

1 FIRST CARD

# #1004 USB Desk Fan

**Colors:** Black

**Material:** Metal

**Width:** 6.125 in

**Height:** 6 in

**Length:** 3 in



Keep yourself and your devices Cool with this metal USB desktop fan. Each fan is conveniently sized at 6x3 in., to easily fit on a desk or transport. Fan has a 360 degree tilt, and plugs into any powered USB port with a high quality metal body with aluminum blades. Great for desks, offices, nightstands and anywhere you need a little cool air.

1 FIRST CARD

# #1005 Mad Man Boomerang Waterproof Wireless Speaker



## PRODUCT DETAILS

Here comes the BOOM! This waterproof, bluetooth speaker from Mad Man features a suction cup holder and lanyard so you can take it anywhere there's water. Use it in the shower or even on the beach, take your tunes wherever you go with the Boomerang Waterproof Wireless Speaker from Mad Man.

- Wireless
- Bluetooth
- Aux input
- Suction cup holder
- Lanyard
- Play/Pause button
- Volume buttons
- Compatible with iPhone, iPad, and all mobile devices with bluetooth

1 FIRST CARD

# #1008 Port Authority Mini Ripstop Dome Duffle



front



back

- 190T 100% polyester mini ripstop
- Webbing carry handles
- Center zippered main compartment opening
- Dimensions: 18"l x 10"h x 7.5"d; Approx. 1,350 cubic inches

Note: Bags not intended for use by children 12 and under.

## COLOR INFORMATION



Deep Black



Gusty Grey



True Royal

1 FIRST CARD

# #1009 12 LED GOOSENECK USB DESK LAMP



The image displays the product packaging and the lamp itself. The top left shows two boxes: a black one and a blue one, both for the 'Eternal Lifestyle' brand. The blue box features a '120 LUMENS' badge and a 'USB/DC PLUG POWERED' badge. The bottom left shows the lamp on a desk with a clock and flowers. The bottom right shows the lamp glowing against a dark background.

**12 LED GOOSENECK USB DESK LAMP**

**FEATURES**

- Natural light, evenly distributed, eye friendly
- Free twisted tube, 14 long-life LEDs, Integrated Flexible Rubberized Lamp-Head Tube
- Touch-Controlled to adjust brightness
- Portable, Lightweight, Yet Reliable & Super Bright
- Power: 1.5W
- Lamp illumination: >200lux 29CM
- Recharges Via USB to Laptop or w/Adapter to Outlet
- Size: 4.3" \* 4.1" \* 11.4" / 11 \* 10.5 \* 29 cm (L \* W \* H)

It's time to light up your bedroom or work space with the Eternal USB Gooseneck Desk Lamp. This lamp features an easy on/off sensor touch button control, and can even remember your last brightness setting. It uses a total of 12 bright white SMD LEDs for just the right amount of brightness and has an adjustable gooseneck that lets you move the light and point it directly where you need it. The light can be powered using either the included USB cable or 3 AA batteries (not included).

1 FIRST CARD

# #1010 Port Authority Fast Break Cinch Pack



This spacious cinch pack is ready for any sport or activity. Convenient pockets keep beverages and must-haves at hand. White trim adds to the sporty look.

- 210 denier polyester
- Black drawcord closure allows this bag to double as a backpack
- Front zippered pocket
- Side mesh pocket with elastic binding
- Side slip pocket
- Dimensions: 16"h x 13"w

Note: Bags not intended for use by children 12 and under.

## COLOR



Black  
PMS NTR BLACK C



Deep Smoke  
PMS 425 C



Hyper Blue  
PMS 7687 C



Lime  
PMS 360 C



Neon Yellow  
PMS NO MATCH



Pop Orange  
PMS 7625 C



Purple  
PMS 7679 C



True Red  
PMS 193 C

1 FIRST CARD

# #1011 STAINLESS STEEL LUNCHBOX



## STAINLESS STEEL LUNCH BOX

### FEATURES

Made from durable & high-quality stainless steel. Save money when taking food to work or school. Keep your food & planet safe from plastics that end up in the trash. Use the lid as a reusable plate.

#### Features:

- Double Tier
  - Locks into place
  - Ergonomic Handle
  - Dishwasher-Safe
  - Stackable
- Each tier is 5.5 x 2.4

1 FIRST CARD



# #1012 Port Authority Honeycomb Sling Pack



front



back

Honeycomb texture adds interest to this budget-minded sling pack.

- 600 denier polyester, 420 denier honeycomb polyester contrast
- Front zippered pocket
- Main compartment with zippered side entry
- Dimensions: 17"h x 13"w x 6"d; Approx. 1,326 cubic inches

Note: Bags not intended for use by children 12 and under. SanMar bags manufactured prior to August 31, 2018 include a Social Responsibility and Prop 65 hangtag. SanMar bags manufactured after August 31, 2018 will not include a hangtag.

## COLOR INFORMATION



Black



Lime



Navy



Red



Twilight Blue

1 FIRST CARD

# #1013 Port & Company Core Fleece Blanket



This soft fleece blanket has a simple turned hem and is a great value.

- 9.8-ounce linear yard, 100% polyester fleece
- Fully hemmed
- Dimensions: 50" x 60"

## CARE INSTRUCTIONS

Machine wash cold with like colors. Gentle cycle. Only non-chlorine bleach when needed. Tumble dry delicate. Cool iron if needed.

Dimensions: 50" x 60"



Black



Magnet



Rich Red



Snorkel Blue



True Navy



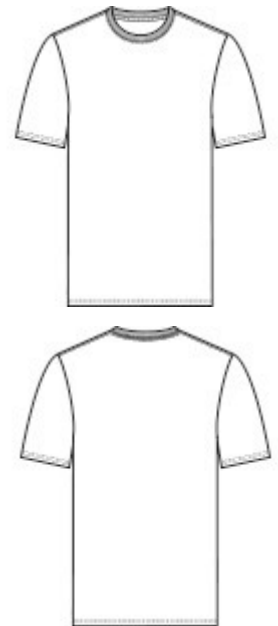
Vine Green

1 FIRST CARD

# #1014 Port & Company 61 Short Sleeve T-shirt



- 6.1-ounce, 100% soft spun cotton
- 98/2 cotton/poly (Ash)
- 90/10 cotton/poly (Athletic Heather)
- 50/50 cotton/poly (Dark Heather Grey)



**Adult Sizes: S—6XL**



**SIZE CHART**

	S	M	L	XL	2XL	3XL	4XL	5XL	6XL
Chest	35-37	38-40	41-43	44-46	47-49	50-53	54-57	58-60	61-63

**1 FIRST CARD**

# #1019 Port Authority Upright Crossbody Bag



- 300D polyester canvas
- Unisex design
- Zippered main compartment
- Front zippered compartment
- Back slip pocket
- Adjustable webbing strap
- Black molded zipper pulls
- Dimensions: 8.5"h x 6.5"w x 2.25"d; Approx. 124 cubic inches

Note: Bags not intended for use by children 12 and under.

#### COLOR INFORMATION



Black  
PMS BLACK C



Dark Charcoal  
PMS 7540C



Olive Green  
PMS 7771C



River Blue Navy  
PMS 533C

1 FIRST CARD

# #1020 Port Authority Hip Pack



Black

## Product Description

Simple and compact, this pack can sit comfortably on your hip or across your body. It has two zippered pockets to store grab-and-go essentials.

- 600 denier polyester canvas
- Zippered main compartment
- Back zippered security pocket
- Adjustable waist strap with buckle fits waist size up to 45 inches
- Reflective trim detail
- Dimensions: 4.375"h x 12.5"w x 2.0625"d; Approx. 143 cubic inches

1 FIRST CARD

# #1022

# Back Pack



- 600 denier polyester, 420 denier honeycomb polyester contrast
- Interior organizer panel • Comfortable ergonomic padded straps and padded back
- Web top handle • Mesh water bottle holder
- Exterior pocket with hook and loop closure • Dimensions: 17.25”h x 13.25”w x 5.5”d; Approx. 1,257 cubic inches

1 FIRST CARD

# #1023 250 LUMEN Luminar Outdoor Lantern



## Product Overview

Light up the outdoors with this 250 Lumen Compact Pop-Up Lantern. The rugged housing protects the lantern in your pack or tool kit. Pop up the top to turn the light on. The twin loop handles make the lantern easy to carry, easy to hang up in a tent or jobsite. Stable base and compact design prevents tipping. Safe, brilliant white LEDs for plenty of light with long battery life.

- Powerful 250 lumen LED projects a wide area beam of light
- Pop open the top for instant light
- Rugged housing protects lantern when not in use
- Stable base, folding loop handles make it easy to place the light where you need it

1 FIRST CARD

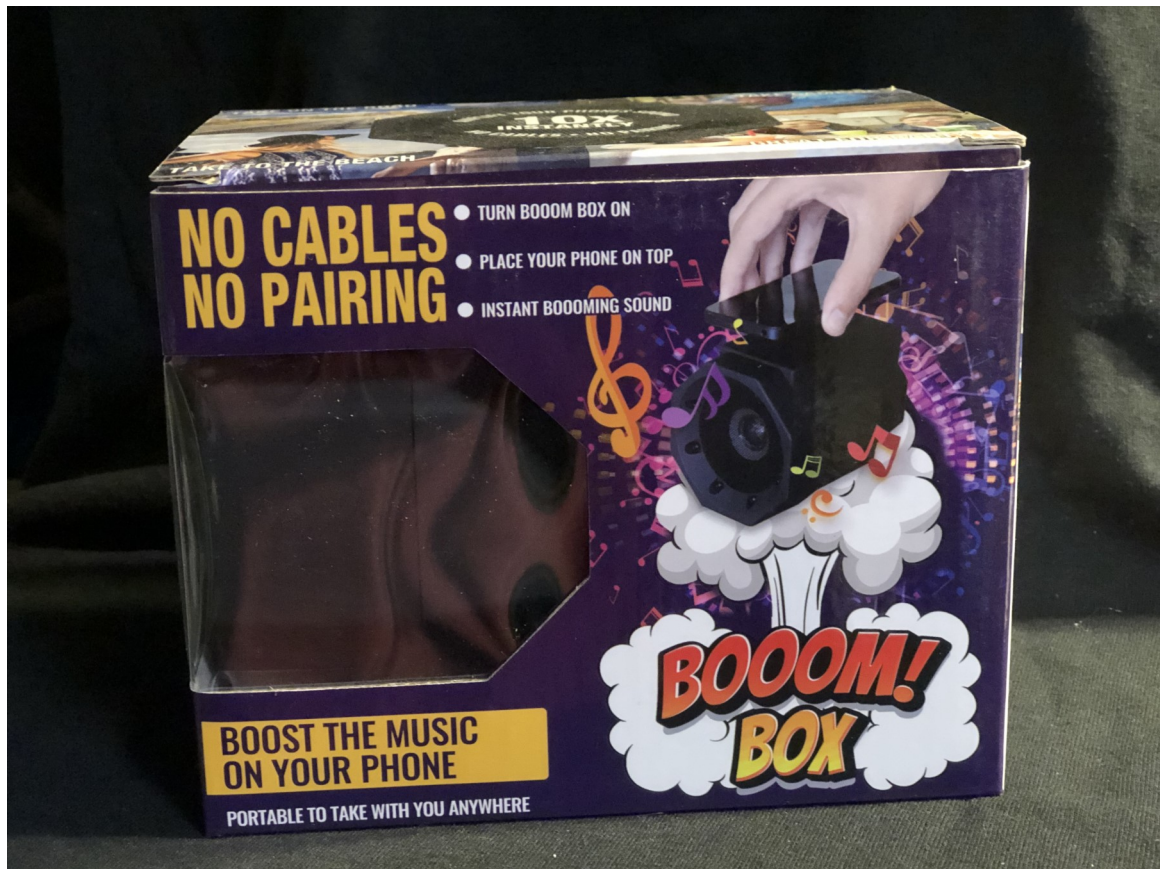
# #1026 Hands Free Flexi Reader LED Neck Light



1 FIRST CARD



# #1027 Touch Speaker Boombox



Whether you are listening to music, or answering your phone.. Just put your phone on speaker mode.. And lay on top of the boom box! USB CHARGING  
**No Cables or Pairing needed!**

1 FIRST CARD

# #1030

# Lunch Totes

## A: Flower



## B: Solid Blue



PERFECTLY SPACIOUS FOR ALL YOUR NEEDS!



WORK



PICNIC



ROAD TRIP



SCHOOL

### Lunch Tote

### 6 can cooler Lunch Tote

1 FIRST CARD

# #1030 Inspirational Shirts

I



J



Have another shirt color in mind? Please ask..

Please be mindful of color of shirt, as these are not returnable.

Make sure you mark your design, color of shirt and size on your card.

\*\* Limited quantities.



Ath Heather



Colonial Blue



Jade



Daffodil Yellow



Dill Green



Natural



Charcoal



Carolina Blue

SIZE CHART

	S	M	L	XL	2XL	3XL	4XL	5XL	6XL
Chest	35-37	38-40	41-43	44-46	47-49	50-53	54-57	58-60	61-63

1 FIRST CARD

# #1030 Inspirational Shirts

I



J



Have another shirt color in mind? Please ask..

Please be mindful of color of shirt, as these are not returnable.

Make sure you mark your design, color of shirt and size on your card.

\*\* Limited quantities.



Ath Heather



Colonial Blue



Jade



Daffodil Yellow



Dill Green



Natural



Charcoal



Carolina Blue

SIZE CHART

	S	M	L	XL	2XL	3XL	4XL	5XL	6XL
Chest	35-37	38-40	41-43	44-46	47-49	50-53	54-57	58-60	61-63

1 FIRST CARD

**#1037 Coleman  
1/3 Gallon Jug  
meter**



**Red**

**1 FIRST CARD**

# #1039 BBQ Fork Thermometer



- Jumbo Blue LCD display
- Precision digital thermometer (°C/°F)
- Fork made with FDA compliant Stainless
- Includes 2 AAA batteries
- Built-in count up/count down timer

1 FIRST CARD

# #1042 Hammer



**16 oz.**

Carbon steel head, black rubberized handle, magnetic nail starter head.

1 FIRST CARD

# #1046 Safety Tool w/COB Flashlight



- Steel pointed head to shatter glass
- Seat Belt cutter
- Magnetic head to stick to vehicle
- Button cell batteries included
- Extra bright white COB light

1 FIRST CARD



#1052

# Large Nurse Tote Bag



- Water-resistant lining
- Hook-and-Loop closure top
- Inside pocket and key fob

---

**Dimensions:** 12" x 14 x 2"

1 FIRST CARD

# #1053 KODA T-Shirt



## Universal Adult Sizes: S-6X

Kentucky Organ Donor Affiliates

(KODA) is dedicated to saving lives through organ and tissue donation and transplantation.

KODA was formed to establish a statewide educational and procurement network. KODA is an independent, non-profit



### SIZE CHART

	S	M	L	XL	2XL	3XL	4XL	5XL	6XL
Chest	35-37	38-40	41-43	44-46	47-49	50-53	54-57	58-60	61-63

1 FIRST CARD

# #1060 Motivational Jumbo Sports 64oz Water Bottle

Measure  
Your  
Intake!!!



- Giant sized mouth piece makes it easy to add big chunks of your fruit or veggie favorites
- Hourly motivational cues keep your hydration goal on point.
- “Big-Hand” carrying handle
- This bottle holds tons of ice
- Pop-up sipping spout
- FOR COLD WATER ONLY
- DISHWASHER SAFE

1 FIRST CARD

# #1070 Mini 300 psi Air Compressor



## Description

300 PSI Air Compressor with Pressure Gauge! Quickly inflates bike tires, sporting goods, and more with this convenient quick-fill air compressor. Offering 300 PSI, this electric compressor features a built-in pressure gauge and several extra adapters.

1 FIRST CARD

# #1072 12" Standard Compression Socks

12" Standard Compression Socks



Available colors:

Black

Or

Navy

By Prestige Medical..

Lightweight compression socks for nurses who spend long hours on their feet.

---

**Fabric Material:** 65% nylon and 35% Lycra spandex

**Compression:** 10 mmHg

**Length:** 12 inches

**Unit of Measure:** Single pairs

**Fits Women's Shoe Sizes:** 5-9

**Fits Men's Shoe Sizes:** 4-8

1 FIRST CARD

**#1073**

# Large Calf Compression Socks

Large Calf Compression Socks



Available colors:  
Black Only

By Prestige Medical..

Designed for larger calf sizes. Fits up to a 22" diameter calf.  
Features 15-18 mmHg compression. Made of 65% nylon and 35%  
Lycra® Spandex. 12" in length. Single pairs.

**Fits Women's Shoe Sizes: 5-9**

**Fits Men's Shoe Sizes: 4-8**

1 FIRST CARD

# #1090 Michelin 25" Snow Brush with ice scraper



Abc

- 25 inch Michelin-branded snow brush.
- Vibrant blue, yellow, and gray color scheme.
- Power-scraping grip design with second handhold for extra power.
- 7.5-inch brush head with 3 thick rows of soft-touch PVC bristles.
- Durable 4-inch wide ice scraper/ice chipper.
- Ergonomic non-slip foam handle.
- Additional hand-hold on brush head for two-handed use
- Strong yet lightweight aluminum shaft...

1 FIRST CARD

# #1091 Laundry bag “Our home ... Laundry”



Nylon Laundry bag, 30x40  
Royal

1 FIRST CARD



# #1092 Mental Health Awareness Short Sleeve Tee



Lime



Carolina Blue



Mental Health Awareness



Sangria



Natural



Gold



Royal



Jade



Heather Red



Candy Pink

**Adult Sizes:  
S—6XL**

- 6.1-ounce, 100% soft spun cotton
- 98/2 cotton/poly (Ash)
- 90/10 cotton/poly

SIZE CHART

	S	M	L	XL	2XL	3XL	4XL	5XL	6XL
Chest	35-37	38-40	41-43	44-46	47-49	50-53	54-57	58-60	61-63

1 FIRST CARD

# #1095 Animal Selfie T-Shirts

**D**



**E**



Natural



Gold



Ash



Orange  
Sherbert



Orange

Adult Unisex Sizes:  
S—6XL



Carolina  
Blue

SIZE CHART

	S	M	L	XL	2XL	3XL	4XL	5XL	6XL
Chest	35-37	38-40	41-43	44-46	47-49	50-53	54-57	58-60	61-63

T-shirt Only

1 FIRST CARD

# #1096

# Pet Shirts

G

F



Have another shirt color in mind? Please ask..

Please be mindful of color of shirt, as these are not returnable.

Make sure you mark your design, color of shirt and size on your card.

\*\* Limited quantities.

### Adult Unisex Sizes:



Ash



Cardinal



Charcoal

### Adult Unisex Sizes: S—6XL

#### SIZE CHART

	S	M	L	XL	2XL	3XL	4XL	5XL	6XL
Chest	35-37	38-40	41-43	44-46	47-49	50-53	54-57	58-60	61-63

## 1 FIRST CARD

# #1097

# Support Shirt



Presses well on all colors.

Please be mindful of color of shirt, as these are not returnable.

Make sure you mark your design, color of shirt and size on your card.

\*\* Limited quantities.



### SIZE CHART

	S	M	L	XL	2XL	3XL	4XL	5XL	6XL
Chest	35-37	38-40	41-43	44-46	47-49	50-53	54-57	58-60	61-63

Adult Unisex Sizes:  
S—6XL

1 FIRST CARD

# #1098 Centerpoint Compact Binoculars



Sleek, compact and efficient profile  
Features reliable roof design.  
Wide field of view and high light transmission.

1 FIRST CARD

**#1099**      **Vista Crest**  
*Rechargeable*  
**Lint Remover**



Experience effortless lint removal with our Rechargeable Lint Remover. Featuring a three-blade design, it efficiently tackles lint on sweaters, skirts, pants and more. It's easy to use and travel-friendly, with a detachable lint collector and cleaning brush included for hassle-free maintenance.

Item Size: 2.4" x 2.9" x 5.5"

1 FIRST CARD